

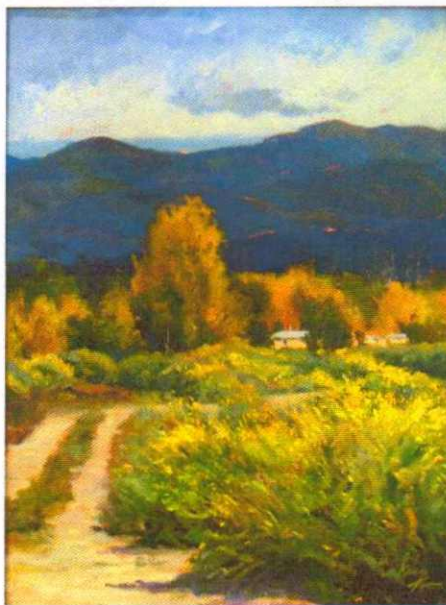
Kandy Tate

New Mexico Artist Kandy Tate approaches each canvas with immediacy, reflecting the drama of sunlight with bold brush strokes. Her passion for painting, inspired by her travels through Europe and the Flint Hills of Kansas, is reflected through her impressionistic way of perceiving the subject. The dramatic effects of light on ladies in gardens, and even the crow of the rooster and his chicks, provide Kandy with heightened inspiration that express the effects of light and hue.

"An artist should be in love with what she sees and paints, and hopefully it will speak to the viewer."

When moving to New Mexico full-time in 2006 from Wichita, Kansas, Kandy immersed herself fully in her surroundings, painting numerous landscapes of the region, accentuating the atmosphere and colorful hues of every subject. Her color usage is like jewels dazzling in the sunlight, as she captures the last seconds of a brilliant red sunset falling behind the mountains of a landscape. The landscape today is just as intoxicating as it was to the early Taos artists.

Kandy designs her paintings according to her vision. The emotive power of landscape scenery offers a boundless source of inspiration and expressive force in her works. Kandy focuses entirely on depicting the fleeting effects of light and color on all surfaces she encounters in her travels. This is a major example of the penetrative, insightful character of her anthropomorphic landscapes.



Her style resembles impressionism because she doesn't labor over details. Painting to Kandy is not what things look like, but states of feeling and reactions of color and sunlight on all subjects and shapes.

Kandy received her formal training at Wichita State University, where she earned a Bachelor of Fine Art in both Art Education and Painting. She has also studied in Europe. Her dream was to always be a full time artist. She has been very successful with that dream.

American Artist published in New York and Art of the West magazines have featured Kandy's paintings. Her paintings are included in many corporate and private collections throughout Europe, Egypt, Hawaii and continental United States. An oil painting depicting Barbara Bush and Millie in the Rose Garden is currently hanging in the former President's home in Houston, Texas. It hung in the White House while President Bush was in office. A print of "Barbara and Millie" is hanging in the Barbara Bush Middle School in San Antonio Texas. Kandy has received many awards in oil and watercolor competitions throughout the United States. In the spring of 1999 one of Kandy's paintings was chosen by a movie production company in New York to be used in a movie. The painting that was chosen depicts a Wichita, Kansas skyline hanging in a Wichita hotel lobby scene. The movie, starring Danny DeVito and Kevin Spacey, was titled "The Big Kahuna." This same painting was selected for the 2003 Wichita metro phonebook cover by Feist Publications, which has a circulation of over 400,000. Kandy has done several metro phonebook covers including greater Kansas City, Southwest Oklahoma and other Kansas towns. Her work has been used in many TV commercials in Wichita. In 2001 Kandy had a painting used on a Christmas CD cover by a musical group SPIRIT.