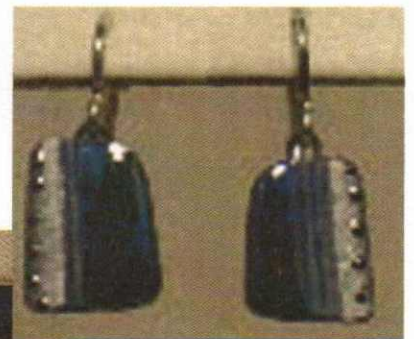


## Cynthia Wallmo as Beyond Cyn

Cynthia Wallmo earned her Bachelors degree in ceramics and sculpture from the University of Southern Colorado in 1983. Cynthia was a production potter for a few years, but when she started designing porcelain jewelry she discovered an excitingly different rapport with clay. Drawing on her sculpture experience, she has created unique wearable designs in lightweight porcelain.

The materials and the process inspire the designs of her porcelain jewelry. Communication with the material allows a certain design freedom and honesty of process, resulting in designs that could not have been created with a pad and pencil. New pieces unfold and surprise her. The trick is recognizing something good when you get it. She rolls out a piece of porcelain, discovering a beautiful rough edge that could not have been intentionally manipulated. She incorporates this edge into the design by juxtaposing geometric shapes and symbols.

This way she gets the best of both worlds. The true organic nature of the porcelain is enhanced by the various design elements she chooses to incorporate as the piece demands. This is an expression of accepting those things in life we can and cannot control.



Cynthia Wallmo as Beyond Cyn